



COPPER CREEK ES





Conference room



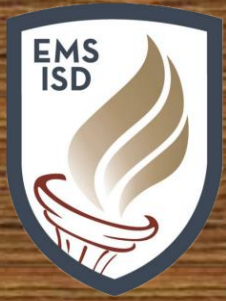
EMS staff waxing floors



Gym flooring

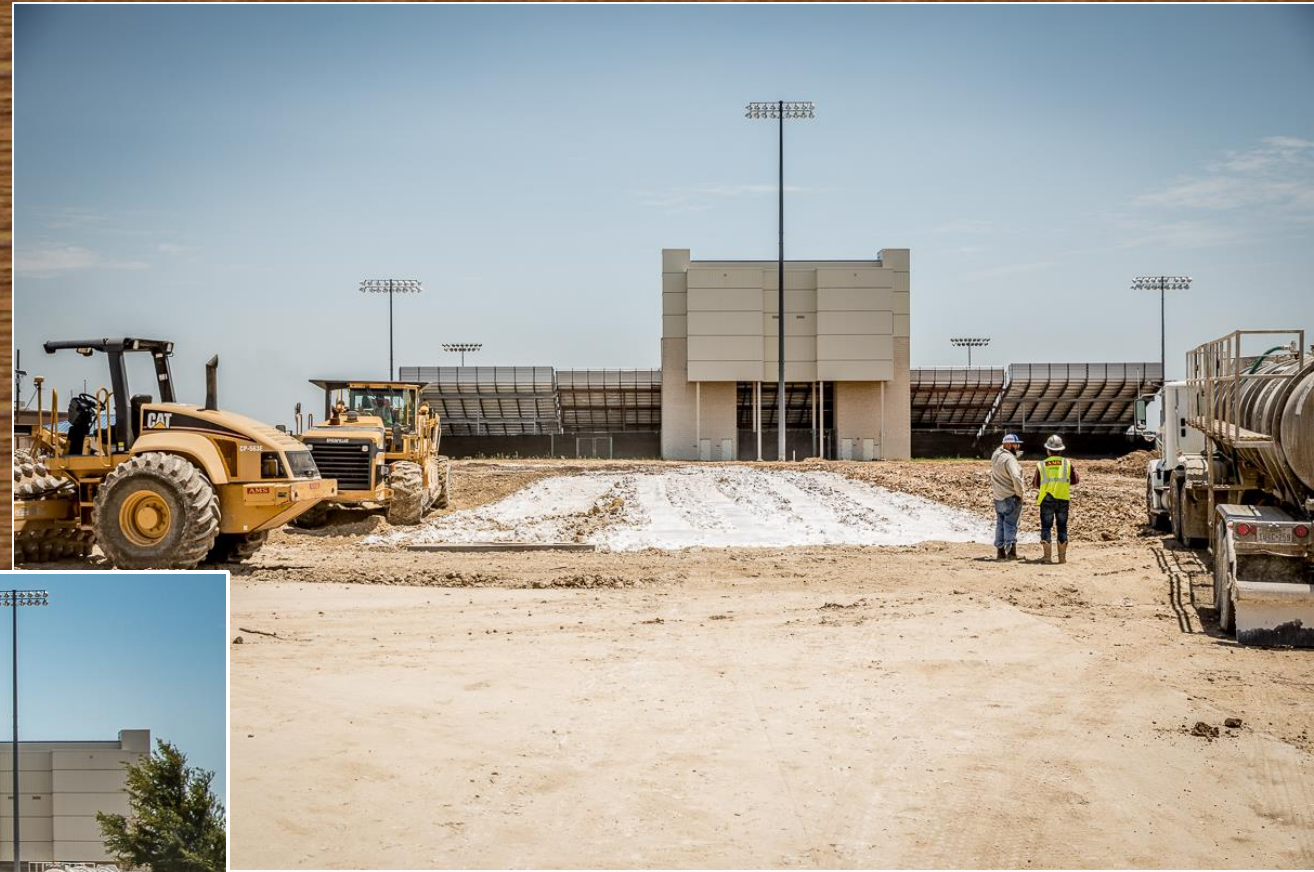


Kitchen graphics



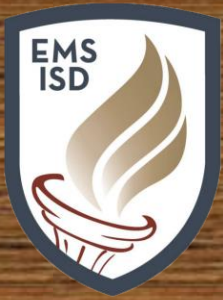
BOSWELL HS

Expansion of the entrance



Lime stabilization of parking lot





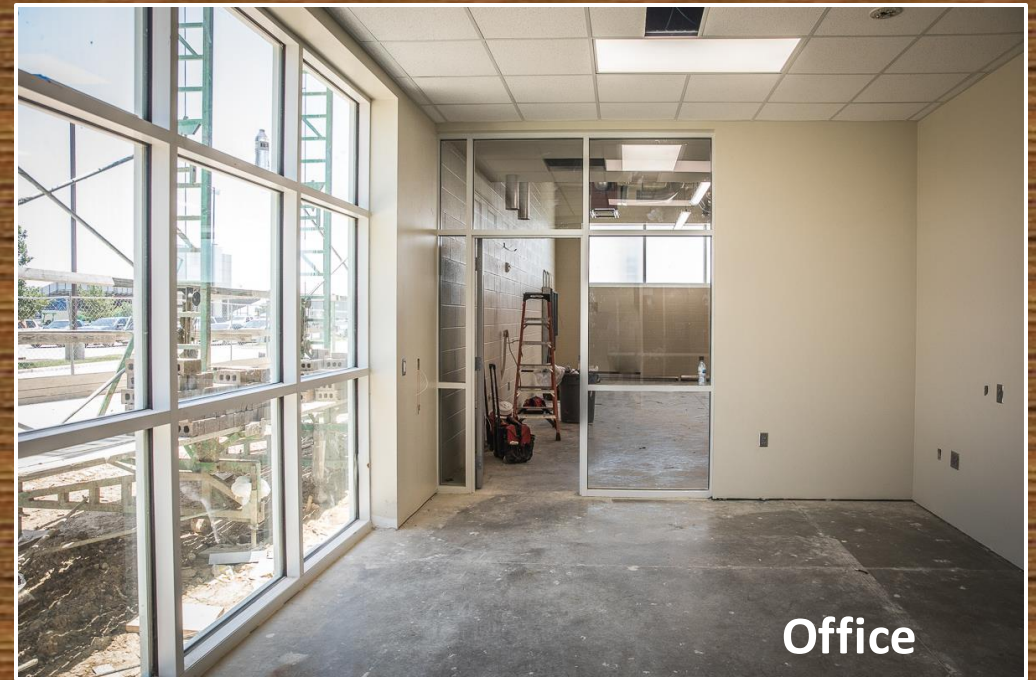
Utility work



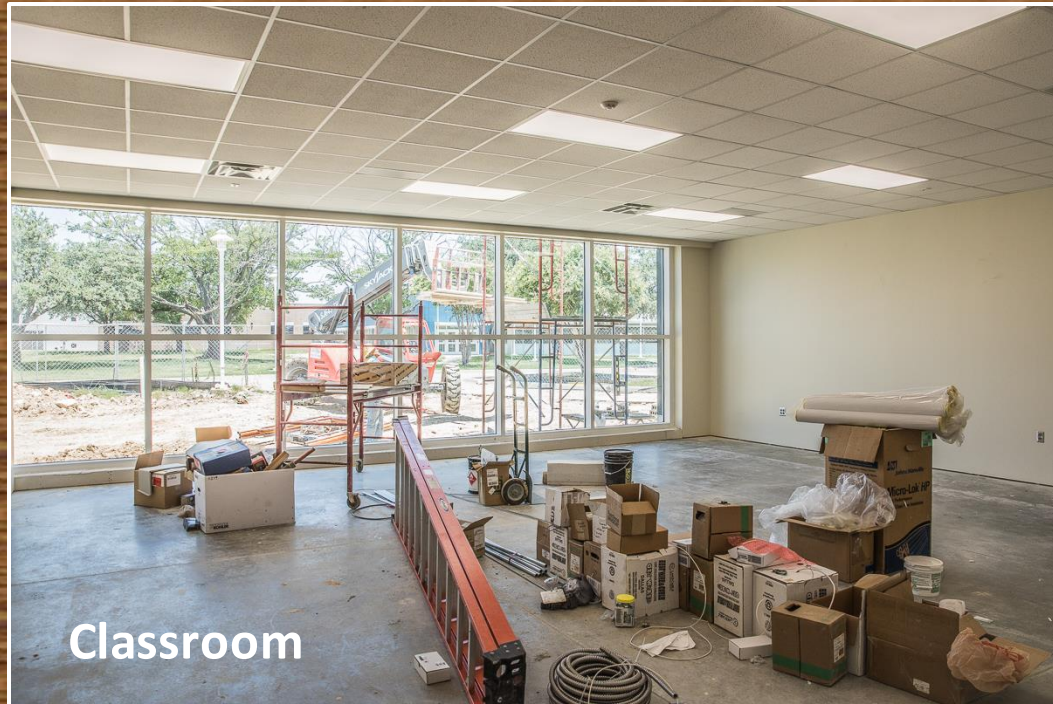
**Masonry in progress at
the Ag Science building**



Restroom tile work



Office



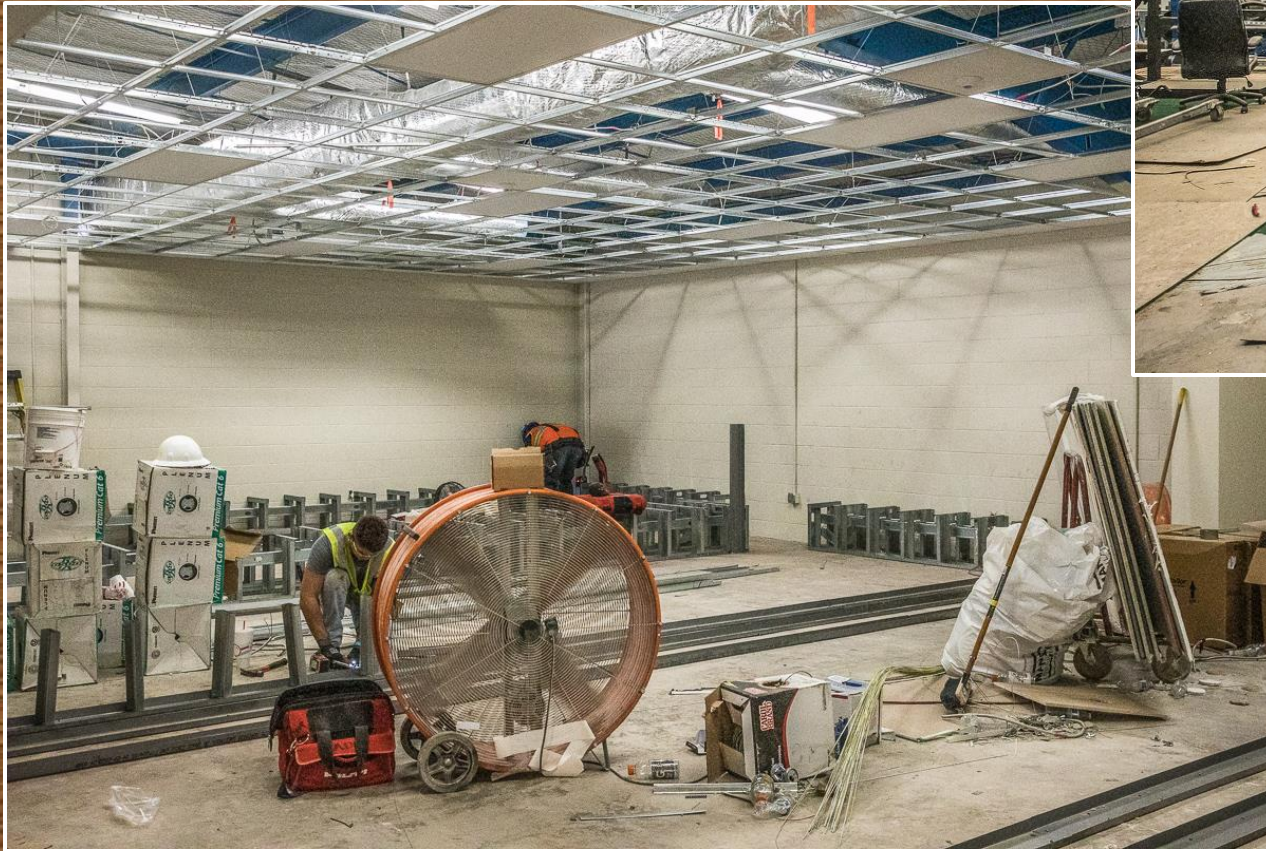
Classroom



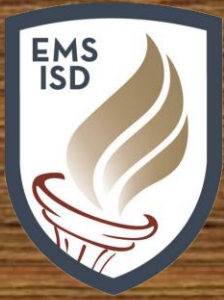
Finalizing lab



Installing the locker bases and ceiling tiles



Old turf area with new
training room. Remaining
space will be organized into
weight room.



Currently installing
collector drain.
Estimated completion
August 17

TURF PROJECTS

Prairie Vista MS



Creekview MS



Currently installing
e-layer/cushdrain.
Estimated completion
August 19



**Currently installing turf
Estimated completion
August 10**

Highland MS



ED Willkie MS

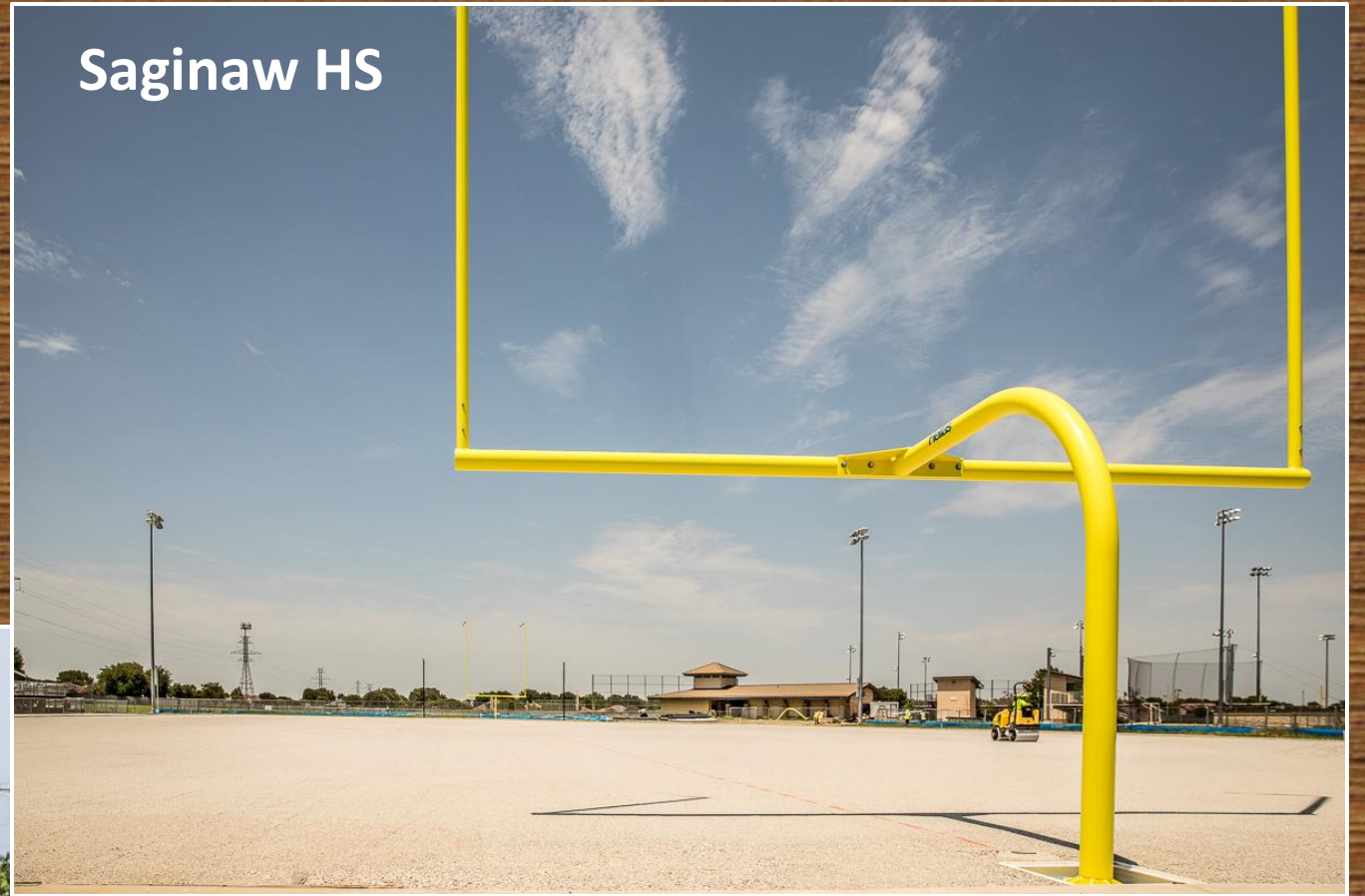


**Currently finishing up lime
stabilization and collector
drain. Estimated completion
August 17**



Currently finishing
cushdrain and beginning
e-layer.
Estimated completion
August 13

Saginaw HS



Chisholm Trail HS



Currently installing
cushdrain. Estimated
completion August 17



TENNIS COURT RESURFACING AND WIND SLATS



**Saginaw HS, Chisholm
Trail HS, Prairie Vista
MS, Ed Willkie MS**



LAKE COUNTRY ES

New
southern
entrance



Tree protection has been installed



LAKE COUNTRY ES

Gradework has begun



Run-off fencing has been installed





NETWORK OPERATIONS CENTER (NOC)

Server room



Generator pad with electrical tubing in place



Additional HVAC support





PROGRESS UPDATE OF OTHER PROJECTS

- Security Upgrades at Multiple Campuses and Jim Knight Maintenance Facility Additions and Renovations – GMP is under consideration tonight
- Central Office – Reviewing final finishes
- Eagle Mountain HS – Design and site development continues
- Wayside MS – Working on site development